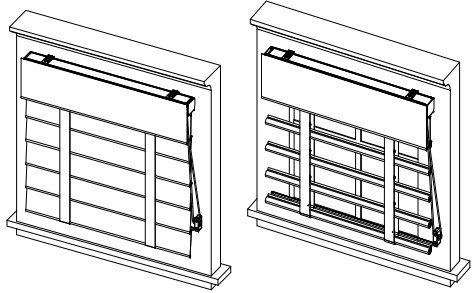


N300614-1
65101-50740-A
Installation Instructions
BelleVue Shade



Getting Started


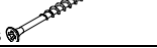


Remove shade from package. Save packaging until shade is installed and working to your satisfaction.

Tools:

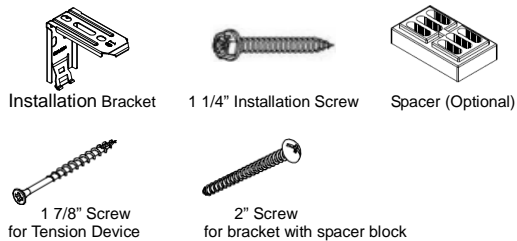
- Level
- Measuring Tape
- Pencil
- Power drill (6mm hex driver and drill bit)
- Screwdriver



You will need to use the following fasteners for your particular mounting surface.

Surface	Fastener
Wood	#8 1 1/4" Screws (Provide) 
	M4x48mm screws 
Drywall/Plaster	Wall Anchors, Expansion Bolts (Not Provide) 
Metal	Sheet Metal Screws (Not Provide) 

Check Component/Hardware:

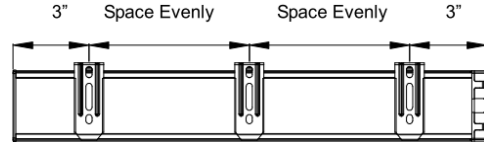


Hardware Standard Quantity

Shade Width	W ≤ 36"	36" < W ≤ 63"	63" < W ≤ 90"	90" < W ≤ 96"
Installation Bracket	2	3	4	5
1 1/4" Screw (for Installation Bracket)	4	6	8	10
1 7/8" screw (for Tension Device)	2	2	2	2
Spacer Block (Optional)	1pc for extend distance 10mm 2pcs for extend distance 18mm			
2" Screw (for Installation Bracket with spacer block)	4	6	8	10

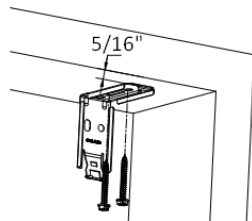
Step 1: To Install bracket

Measure 3" from both ends of the head rail. Mark bracket location on the mounting surface.
 *For 42" < Shade Width ≤ 63" , please move the middle bracket 1 1/8" towards the right side.
 ** Proper alignment of brackets will make installation easier.



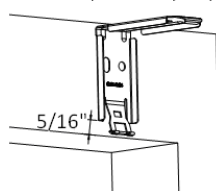
Inside Mount

- Allocate a minimum distance of 5/16" from wall to the front of brackets.
- Use two 1 1/4" screws to secure brackets. Use wall anchors for drywall or plaster wall.



Outside Mount

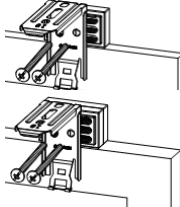
- Allocate a minimum distance of 5/16" from wall to the bottom of the bracket as right drawing.
- Use two 1 1/4" screws to attach each bracket. Use wall anchors for drywall or plaster wall.



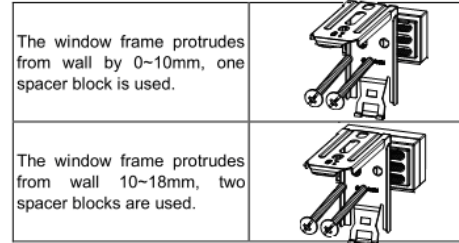
Note: If spacer block is required for outside mount, please use 2" screw and follow the following guide:

Please always make sure the raised side of the spacer block is against the bracket.

If 2pcs spacer blocks are required, please follow the right illustration to attach the spacer blocks. Mount the



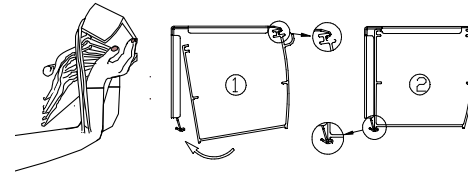
combination of the bracket and spacer block with two 2" screw.



Step 2: To Install the shade

Position head rail at an angle so that it is hooked to the front of the bracket. Then push it upward to snap into the bracket.

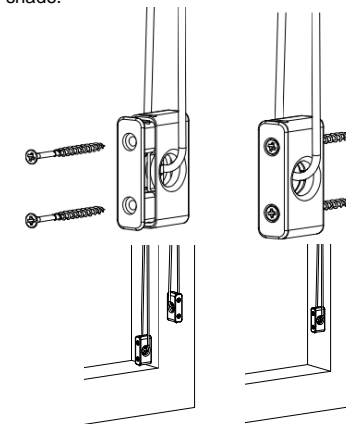
⚠ For proper installation, start with attaching the front rail to the bracket.



*The Shade is heavy. Please be careful!

Step 3: To Install the tension device

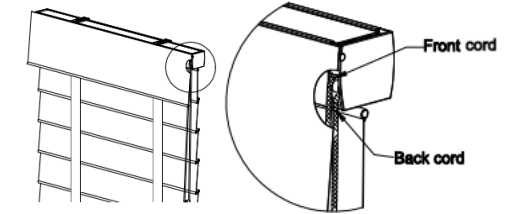
Measure and mark the location where the tension device will be mounted. Mount the tension device with 2 pcs of 2" screws. The mounting screws must be secured into a solid surface or molly. When positioning and mounting the tension device, make sure the cord is taut without stretching, twisting or crossing, and the tension device and control cord does not interfere with raising or lowering the shade.



To operate the Shade

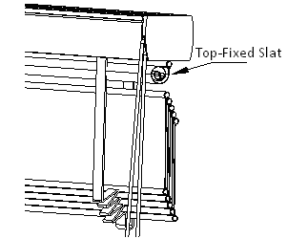
Pull cord to operate shade. Tension device must be fully tightened before operating the shade.

- Pull front cord to raise the shade and close the fabric slats. For SmartRelease, pull the front cord once, the shade will raise automatically.
- Pull back cord to lower the shade and roll the fabric slats. For SmartRelease, pull the back cord once, the shade will lower automatically.

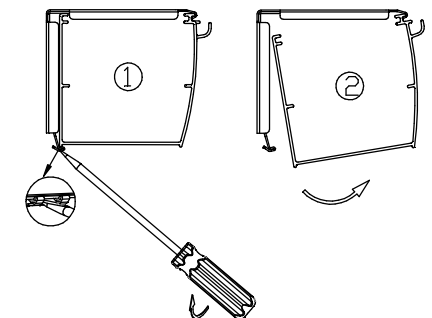


To remove the Shade

Raise the shade, and then roll up the valance and the top-fixed slat by hand to see the installation bracket position.



Gently insert the flat screwdriver into the back slot of the installation bracket and turn clockwise. Remove the shade as below drawing.



Cleaning Instructions

Perform periodic simple cleaning of your shade will keep your shade looking its best for the years to come. You can dust it with a duster or dusting mitten, or simply use a dry soft cloth to wipe the shade. Do not use detergent or abrasive cleaning solutions to clean the shade since it will likely cause damage to the shade.

★ Congratulations! You have finished installing the blind.

WARNING



Young children can **STRANGLE** in cord and bead chain loops. They can also wrap cords around their necks and **STRANGLE**.

- Always keep cords and bead chains out of children's reach.
- Move cribs, playpens, and other furniture away from cords and bead chains. Children can climb furniture to get to cords.
- Do not tie cords together. Make sure cords do not twist together and create a loop.

ADVERTENCIA



Los niños pequeños corren el riesgo de **ESTRANGULARSE** en los lazos de las cuerdas y cadenas. También se pueden envolver las cuerdas alrededor del cuello y **ESTRANGULARSE**.

- Mantenga siempre las cuerdas y cadenas fuera del alcance de los niños.
- Mueva las cunas, los corrales y otros muebles lejos de las cuerdas y cadenas. Los niños pueden subirse a los muebles para llegar a las cuerdas.
- No ate las cuerdas unas a otras. Asegúrese de que no se enrieden creando un lazo.