



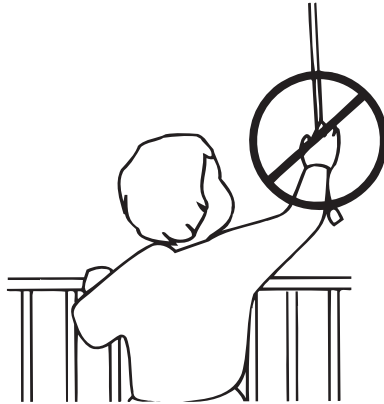
Custom

RomanStyle

FabricShade
owner's handbook



WARNING



Young children can STRANGLE in cord and bead chain loops. They can also wrap cords around their necks and STRANGLE.

- Always keep cords and bead chains out of children's reach.
- Move cribs, playpens, and other furniture away from cords and bead chains. Children can climb furniture to get to cords.
- Do not tie cords together. Make sure cords do not twist together and create a loop.
- Always ensure that inner cord stop devices are within 6 inches (153 mm) of the head rail when the blind is in the fully lowered position. See adjustment instructions.

INSTALLATION INSTRUCTIONS

Step 1. Check Package Contents

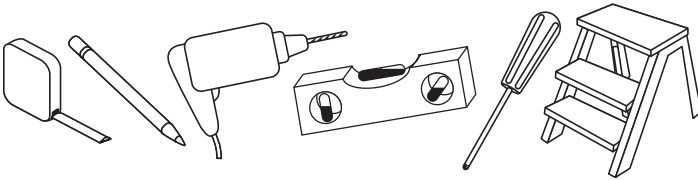
Missing part? Call 1-800-264-1190

Mounting hardware kit includes the following:

Part	Quantity
a. Mounting Brackets	2 (shades up to 36" wide) 3 (shades 36" to 48" wide) 4 (shades 48" to 96" wide)
Note: brackets are for Outside Mount installations only!	
b. 1-1/2" & 2" Screws	2 (shades up to 36" wide) 3 (shades 36" to 48" wide) 4 (shades 48" to 96" wide)
c. 3/4" Screws	2 (shades up to 36" wide) 3 (shades 36" to 48" wide) 4 (shades 48" to 96" wide)

Note: 3/4" & 1-1/2" & screws are for Outside Mount installations only ; 2" screws are for Inside Mount installations only

Step 2. Tools Required



Pencil, tape measure, level, screw driver, step stool, drill.

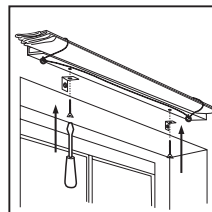
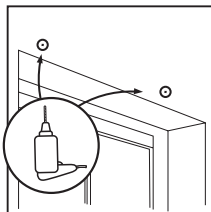
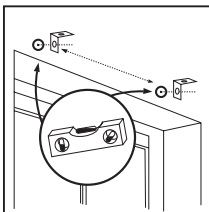
Step 3. Installation

Wallboard or Plaster: use anchors specifically designed for hollow walls (not included).

Concrete, Stone, Brick: use a masonry drill bit and anchors or screws specifically designed for masonry (not included).

For Outside Mounting:

One bracket should be positioned about 2" to 6" from each end of the head rail. For wider shades that require 3 or 4 brackets, these should be spaced evenly between the two outermost brackets. The brackets must not interfere with the cord guides or cord lock or in any way impede the movement of the lift cords – therefore, we recommend that you hold the shade in place and mark the desired bracket locations with a pencil.



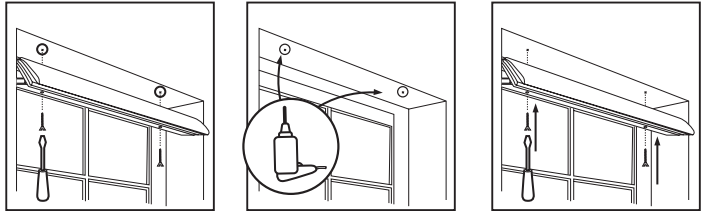
The brackets must be level – use a Spirit Level if necessary to assure proper alignment.

Pre-drill the mounting holes using a 5/64" drill bit, then screw the brackets in place.

Place the head rail on top of the brackets – center the shade over the window opening – then mark the location of each mounting hole on the head rail. Pierce the fabric at the hole locations using the tip of a screw, then pre-drill the mounting holes using a 5/64" drill bit. Attach the shade to the brackets using the 3/4" screws provided.

For Inside Mounting:

Mounting holes are pre-drilled in the Head Rail. Screw the 1-1/4" screws into the head rail until the tips of the screws extend very slightly beyond the top of the head rail. Align the front of the shade with the front edge of the window opening (or position as desired), making sure that the shade is centered in the window opening – then push up on the head rail so that the screw heads leave tiny impressions in the top of the window frame.



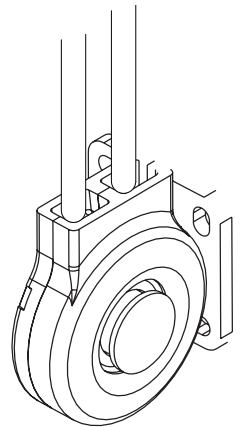
Now, use the impressions as a guide and pre-drill the mounting holes using a 5/64" drill bit – then screw the shade in place.

Step 4. Install the Tension Device – FOR CONTINUOUS LOOP CORD CONTROL SHADES ONLY!

The tension device reduces the hazards of strangulation and entanglement of young children or pets by limiting access to the control cord. Anchor the Tension Device that is attached to the shade's control cord, to the window frame or wall, so that young children cannot pull the cord around their necks.

Lower the shade, and then position the Tension Device on the window frame or the wall so that the Tension Device and control cord do not interfere with raising and lowering the shade.

The Tension Device should be installed without stretching or pulling down on the control cord. Stretching the control cord will cause excessive wear. Do not twist or cross the control cord. Mark the screw hole locations with a pencil, then pre-drill the screw holes using a 3/32" drill bit.



For hollow dry wall installation, use wall anchors (not included).

Step 5. How to Operate

STANDARD CORDED SHADES:

To raise or lower the shade, pull the lift cord slightly to release the cord lock. Adjust the shade to the desired height, and then move the lift cords slightly toward the outside of the shade to lock in place.

CONTINUOUS LOOP CORDED SHADES:

To raise or lower the shade, pull the lift cord slowly & fluently.

TOP-DOWN/BOTTOM-UP SHADES:

The right side cord controls bottom up/down function. The left side cord controls top down/up function.

REPLACEMENT PARTS

In the event that replacement parts are ever needed, you may call: 1-800-264-1190. Please be sure to provide the following information, if possible:

- The complete model or catalog number of your product
- A description of the product
- A description of the part needed

Care Instructions

The packaging and shipping of soft treatments frequently results in minor wrinkling of the fabrics used.

There are different characteristics and handling needs for the variety of fabrics offered in this program.

Please refer to the descriptions below for guidance on how to remedy minor wrinkles upon delivery.

First, allow all items to hang for a few days so wrinkles relax and begin to fall out.

Silk fabrics:

- Natural irregularities give the fabric its unique and desired character. The appearance of slubs, nubs, loops and barre ridges are universally accepted as normal and should not be considered defects.
- If necessary, steam silk to remove stubborn wrinkles. Please note that a good quality steamer is needed so water spots won't form from water spitting out from the steaming device.

Rayon/Poly blends:

- If necessary, steam rayon/poly to remove stubborn wrinkles. Please note that a good quality steamer is needed so water spots won't form from water spitting out from the steaming device.

100% Polyester:

- If necessary, steam polyester or gently iron on a low heat setting to remove stubborn wrinkles. 100% Polyester fabrics release wrinkles easily. Steam or iron on the Polyester / Synthetic Fabrics setting (Low), but be aware that Polyester will melt if the iron is too hot.

Cotton/Poly blends:

- If necessary, gently iron on a Blended Fabric (Medium)

setting to remove stubborn wrinkles.

100% Cotton and 100% Linen:

- If necessary, gently iron on a Cotton (High) setting to remove stubborn wrinkles.

General Cleaning Guidance:

- Dry Cleaning is the best method to clean soiled soft window treatments.
- However, on 100% Polyester, Cotton/Poly blends and 100% Cotton or 100% Linen you may: Spot clean with warm soapy water using mild detergent and a clean sponge. Air-dry and then steam or iron as guided above.